

AUDIO MATRIX



TMX-COMPONENTS



TMX-808A



TMX-200RPM



TMX-100D

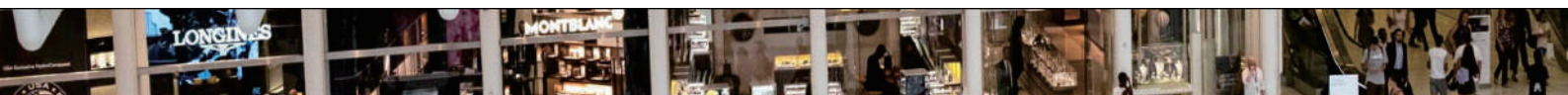


TMX-1000RVC / TMX-200RVA



TMX-200RIO





TMX-1000RVC

Remote Volume Control

digital
PROCESSOR



Features:

- Volume control of TMX808A
- Input/Output signal routing
- LCD screen with output level display
- RD port IN, for connection to TMX-808A
- RD port Link for daisy chain connection
- 100m CAT-5e shield cable

Model	TMX-1000RVC
LCD Display	
Adjustable volume range	-120dB - 0dB
Ports	
RD net to Matrix	RJ45, 100 m CAT-5e shield cable
RD net LINK	RJ45, 100 m CAT-5e shield cable
Dimensions (L x H x D)	147 x 86 x 47 mm





TMX-100D

Remote Volume Control

digital
PROCESSOR

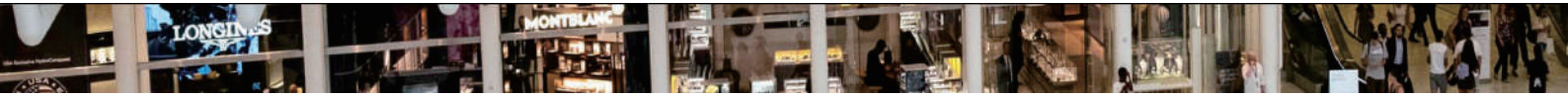


Features:

- 1 input / 1 link out
- LCD display the control in real time, also can control the TMX808A through the touch screen
- Direct power supply by network cable
- Touch Screen 4.3" LCD
- Input/Output audio control
- Audio routing
- Scene Switch

Model	TMX-100D
Ports	
RD net to Matrix	RJ45, 100 m CAT-5e shield cable
RD net LINK	RJ45, 100 m CAT-5e shield cable
Dimensions (L x H x D)	147 x 86 x 47 mm

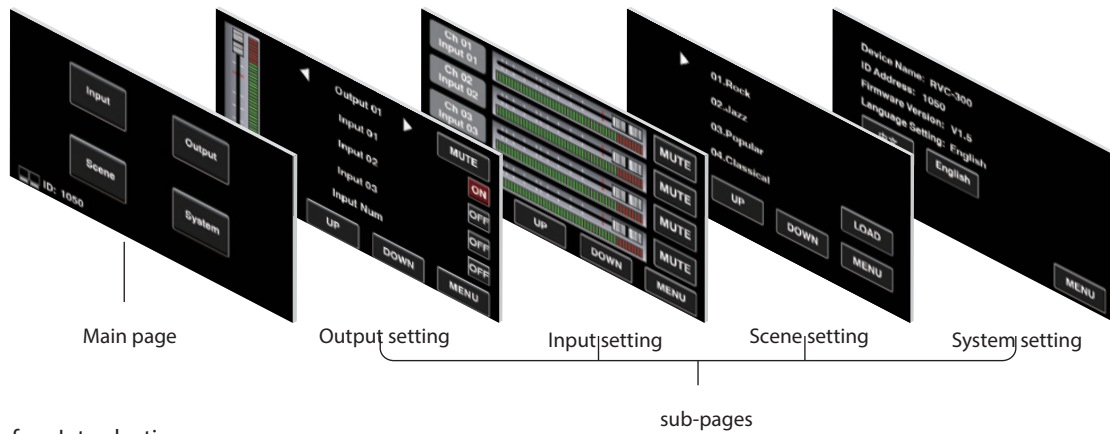




TMX-100D

Remote Volume Control

digital
PROCESSOR



Control Interface Introduction

- TMX-100D main page

Connect the RD port of TMX-808A to the In port of TMX-100D.

After the TMX-808A has successfully recognized and connected to the TMX-100D, the indicator on the lower left will flash, the device address TMX-808A assigned to the TMX-100D also will be displayed. You can enter four sub-pages respectively by click the corresponding buttons on the main interface, namely "Output Setting" "Input Setting" "Scene Setting" "System Setting".

- TMX-100D sub-pages

Output Setting:

You can adjust the output volume, mute and the changes of the output volume can be seen through the volume indicator in this page; You can switch the output channel by "left and right arrow", and "up and down button" to switch the input channel; Switch "ON" "OFF" to customize the input channel routing to the selected output channel.

Input Setting:

You can adjust the input volume, mute and the changes of the input volume can be seen through the volume indicator in this page; The input channel can be switched by "up and down button".

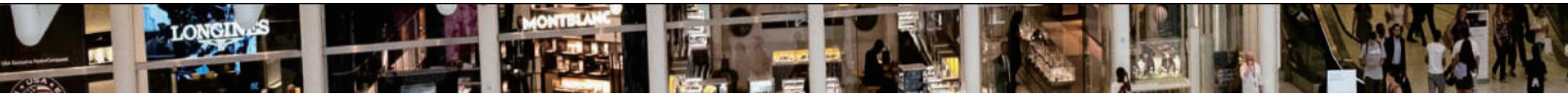
Scene Setting:

Click the "up and down button" to switch to the previous page or next scene, and then click on the desired scene to load (The default scenes loaded in this page are set and saved on the TMX-808A software).

System Setting:

It shows the device name in this page; Device address that TMX-808A assigned to TMX-100D and firmware version; All pages can be switched to Chinese or English through "Chinese" "English" button.





TMX-200RIO

Remote Audio Input/Output device

digital
PROCESSOR

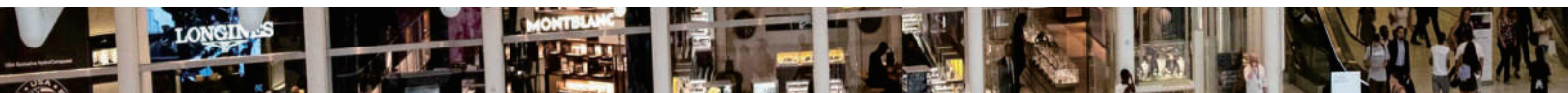


Features

- Channel A and B line inputs
- MIC input
- RD port, for connection to TMX-808A
- 2 x D / A channel line outputs
- 100m CAT-5e shield cable

Specifications

Model	TMX-200RIO
Inputs	
Active Balanced	
Connectors	3-pin female XLR, RCA
Input Impedance	5.1 kΩ
THD+N	< 0.01 % typ 20-20 kHz, +4 dBu
Maximum Input	20.0 dBu
Frequency Response	20-20 kHz, +0, -.05 Db
Dynamic Range	105 dB max, A weighted
Crosstalk	104 dBu ↗ 20-20 kHz, +20 dBu, ch to ch
Outputs	
Active Balanced	
Connectors	Euroblock 1 x 6-pin, 5 mm pitch
Impedance	200 Ω 1%
Maximum Output	+20.0 dBu
Frequency Response	20-20 kHz
Dynamic Range	105 dBu
Crosstalk	104 dB
Indicators	
Signal	-50 dBu Green LED, peak-reading
Overload	-0.5 dBu Red LED, peak-reading
Ports	
RD net to Matrix	RJ45, 100 m CAT-5e shield cable
Dimensions (L x H x D)	147 x 86 x 47 mm



TMX-200RVA

Remote Audio Input/Output device

digital
PROCESSOR



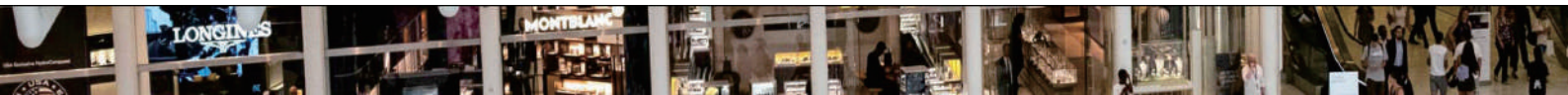
Features

- Volume control of TMX-808A output channels
- Input / Output signal routing
- LCD screen with output level display
- RD port, for connection to TMX808A
- 2 x D / A channel line outputs
- 100m CAT-5e shield cable

Specifications

Model	TMX-200RVA
Analog Outputs x 2	
Active Balanced	
Connectors	Euroblock 1 x 6-pin, 5 mm pitch
Impedance	200 Ω 1%
Maximum Output	+20.0 dBu
Frequency Response	20-20 kHz
Dynamic Range	105 dBu
Crosstalk	104 dB
LCD Display	
Volume range	-120dB - 0dB
Ports	
RD net to Matrix	RJ45, 100 m CAT-5e shield cable
Dimensions (L x H x D)	147 x 86 x 47 mm





TMX-200RPM

Paging station

digital
PROCESSOR



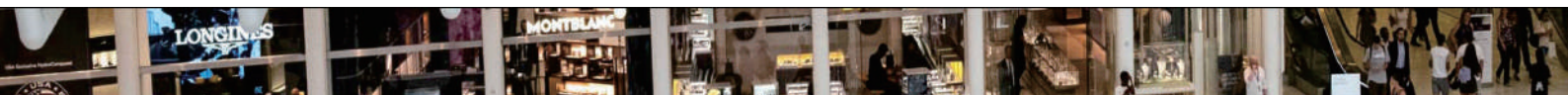
Features

- 12 x paging zones
- UP to 192 zones with 16 x TMX-808A
- Zone LCD display
- Status and communication indicators
- Zone selector with volume control
- Push-to-talk gooseneck microphone
- USB port to load Chimes sound files
- RD port, for connection to MATRIX-A8
- 100m CAT-5e shield cable

Specifications

Model	TMX-200RPM
MIC Input	
Active balanced	
Connector	3-pin female XLR
Phantom Power	+24 VDC @ 100 mA On / off in software
Indicators and switch	
LCD Display	Zone activation
LEDs	Signal Status
Switch	Push to Talk
Ports	
RD net to Matrix	RJ45, 100 m CAT-5e shield cable
USB	For MP3 Chimes Sound file (4 seconds)
Dimensions (L x H x D)	166 x 53 x 162 mm





TMX-100EX

Remote Expander

digital
PROCESSOR



Features

- 3 remote control terminal, each control terminal can connect up to 8 controllers
- LED lights display the working status of ports in real time
- 1 audio + control terminal, 192 zones can be controlled and called by connecting to TMX-200RPM

Specifications

Model	TMX-100EX
Ports	
1 x RD net to Matrix	RJ45, 100 m CAT-5e shield cable
3 x RD net LINK to RVC-1000 & RVC-100D	RJ45, 100 m CAT-5e shield cable
1 x RD net LINK to RVA-200, RPM-200 & RIO-200	RJ45, 100 m CAT-5e shield cable
Power Supply	24 V / DC
Dimensions (L x H x D)	196 x 45 x 128 mm

